



Manufacturer of Electric Heating Elements and Controls

Flange Immersion Heaters



APPLICATIONS:

For heating clean water only in commercial and/or residential applications. Element life is sacrificed in favour of a low initial heater cost.

Industrial water heating - many aqueous solutions which are compatible with stainless steel and Incoloy sheath materials.

For heat transfer oil, cleaners, high temperature air and gas heating.

Request Information

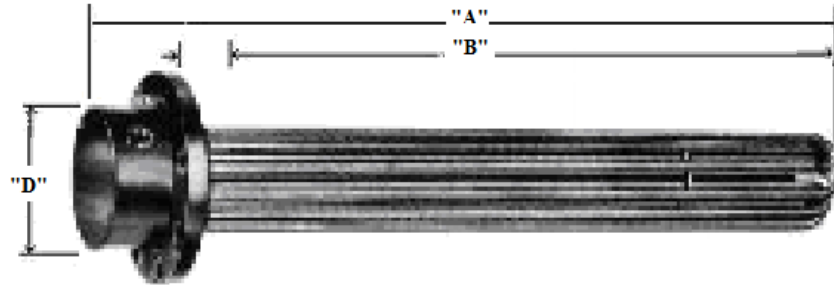
Enter your comments/questions send us an email.

In reference to:

Flange Heaters (Water/Lubricating/Heavy Oil Application) with Densities 5 - 50 Watts Per Inches Square

Additional Options

Spec



- 1) Application Describe in detail :-
- 2) Material Heated Specify :-
- 3) Operating Temperature Operating Temperature required °C
- 4) Operating Pressure Operating Pressure PSI
- 5) Installation No Preference Indoor Outdoor
- 6) Ambient Temperature Ambient Temperature °C
- 7) Rating Wattage, Voltage, Phase -
- 8) Number of Electrical Circuits No Preference Standard Other: No Circuits, kW/Circuit
- 9) Flange Size (in)/Number of Heating Elements
- 10) Flange Material
- 11) Flange Rating No Preference Class 150 Class 300 Specify
- 12) Heating Element Sheath Material
- 13) Heating Element Watt Density
- 14) Heating Element Immersion "B" _____ in/mm Length
- 15) Terminal Box Construction
- 16) Flange Gasket No Preference Spiral Wound Standard Specify
 None
 Cross-Flow Baffles
 Overheated T/C Weld to Sheath
- 17) Other Special Features
 Overheated Adjustable Thermostat Protection
 Type J
 Type K
 Specify